

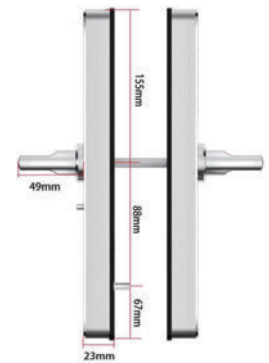
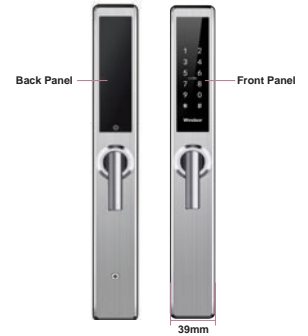
SMART ENTRY MINI LEVER SET

Product codes:
1511 | 1512

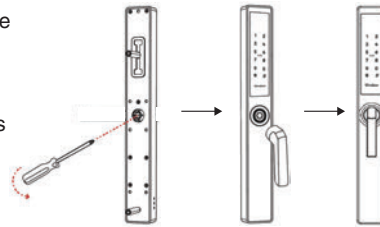
Package Contents

| Part | Description | Quantity |
|------|---------------------------------|----------|
| A | Front Panel | 1 |
| B | Back Panel | 1 |
| C | Mortice Lock | 1 |
| D | Cards | 3 |
| E | Mechanical Keys | 2 |
| F | Waterproof Rubber Plates | 2 |
| G | U-Clip | 1 |
| H | Striker & Dustbox | 1 |
| I | Sliding Threaded Sleeves 35x8mm | 2 |
| J | Sliding Screws 16x5mm | 2 |

| Part | Description | Quantity |
|------|---|----------|
| K | Mortice Screws 10x5mm (for aluminium doors) | 4 |
| L | Mortice Screws 25x4mm (for wooden doors) | 4 |
| M | M5x30mm Screws (for door thickness 30-65mm) | 1 |
| N | M5x50mm Screws (for door thickness 50-65mm) | 1 |
| O | M5x70mm Screws (for door thickness 50-65mm) | 1 |
| P | Spindle for door thickness 35-55mm | 1 |
| Q | Spindle for door thickness 45-65mm | 1 |
| R | Chuck | 1 |
| S | Loctite - Threadlock (Windsor code 1276) | 1 |

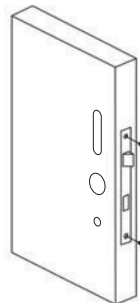


1. Ensure the lever is handed to suit your door. To adjust the handing, remove the Phillips screw in the back of the handle by turning it counterclockwise. Remove the lever and turn it around. Then insert the screw back into the handle seat and re-tighten by turning it clockwise*. Both front and back panels will require this adjustment.

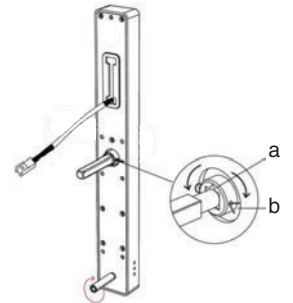


* Recommend using Loctite (Windsor code 1276) on handle screws.

2. Install the mortice lock using the cropping template provided.

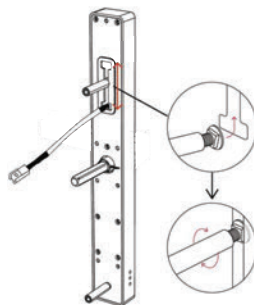


3. Install the spindle into the back of the lever of the front panel. Insert the split pin and bend its front end to fix it into the square shaft (b). Turn the spindle and square shaft to ensure the small arrow is pointing towards the hinges (a).



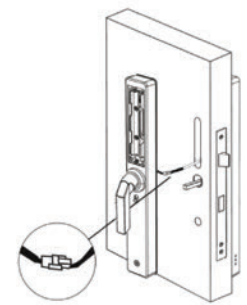
4. Fit the threaded sleeve to the bottom spigot by turning it counterclockwise and tighten it.

5. Insert the sliding threaded sleeve into the top shaft, choosing the correct height depending on the location of the mortice hole drilling. The sliding threaded sleeve can be adjusted between 55mm to 100mm to the centre of the square shaft.

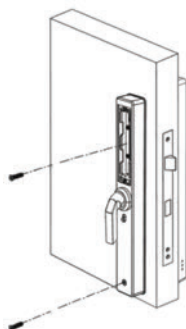


6. Fit the rubber weather seals to the front and back panels.

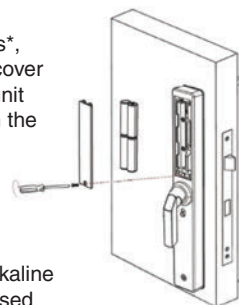
7. Connect the wire through the door into the back panel.



8. Hold the front panel against the door face, sliding the spindle and threaded sleeves through the drilled holes. Install the back panel by tightening the screws through the back panel into the threaded sleeves. Ensure the panels are sitting straight on the door.



9. Insert 4 Alkaline (AA) 1.5V batteries*, slide the battery cover onto the interior unit and tighten it with the screw provided.



* Warranty void if Alkaline batteries are not used

10. To initialise the system open the cover plate of the back panel, press the 'Reset' button pictured for 5 seconds, then lift the lever to throw the bolt to complete the initialisation process.



This product is covered by a one year electronic warranty and 10 year mechanical warranty.

