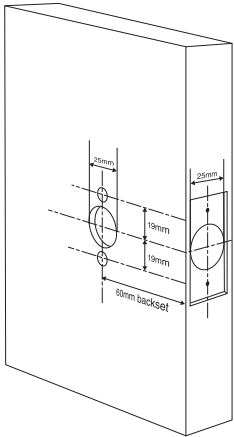
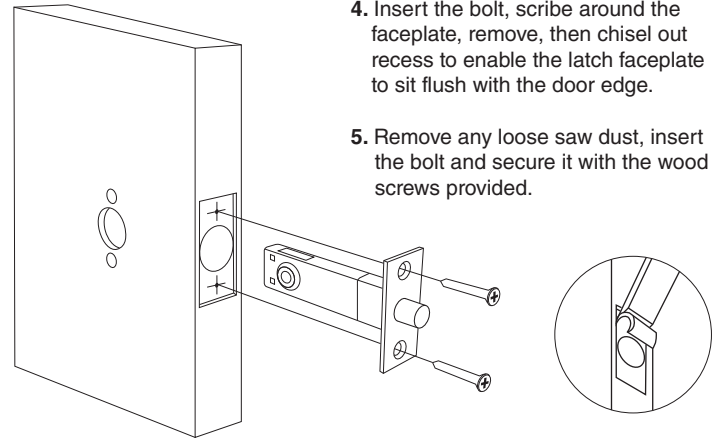


### PRIVACY SET

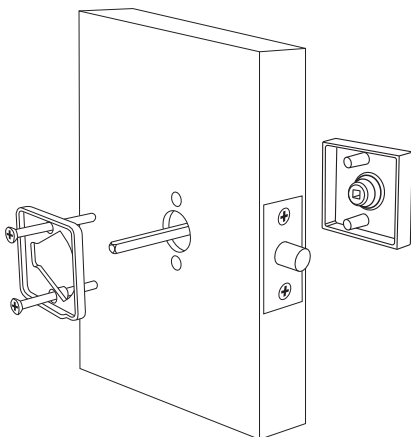
Product code: 8101



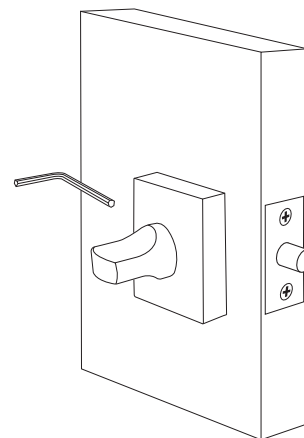
1. Measure the door thickness and mark the centre of the door edge at the desired height for the bolt.
2. Drill a 25mm (1") diameter hole through the door edge. Ensure this hole is square to the door.
3. Mark the face of the door each side for drilling a 25mm diameter spindle hole. The centre of the spindle hole will need to be 60mm from the door edge (backset). Mark two screw holes at 19mm above and below the centre of the spindle hole. Drill the screw holes to 7.5mm to accept the lugs of the plates. For clean cut-outs, drill from both sides, meeting in the middle of the door.



4. Insert the bolt, scribe around the faceplate, remove, then chisel out recess to enable the latch faceplate to sit flush with the door edge.
5. Remove any loose saw dust, insert the bolt and secure it with the wood screws provided.



6. Insert the spindle into the latch so an even amount protrudes on each side of the door.
7. Loosen the grub screw on the outer plate of the turn side and remove the internal mounting plate.
8. Fit the mounting plate to the inside of the door and pass the bolts through the mounting holes at the top and bottom. The bolts will screw into the escape side of the privacy set. Shorten the bolts if necessary. Screw the bolts up tight to secure the two components.



9. Fit the outer plate of the turn side over the mounting plate and fix it by tightening the grub screw on the side of the plate.

#### Notes:

The spindle may need shortened to allow the plates to pull up on the door correctly. To work out the spindle length measure the door thickness and add 35mm.

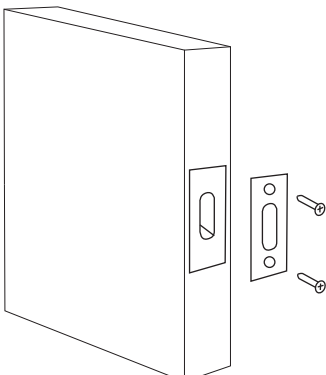
The overall length of the bolts should be 4-8mm more than the door thickness.

#### Notes:

The grub screw may need a re-tighten after a bedding-in period.

We recommend medium strength thread-lock to be used.

Windsor code:1276



10. Close the door against the frame with the bolt extended and mark the bolt position for fitting of the striker.
11. Router or chisel so the striker fits flush. Then mark and drill centre hole to accept the bolt.
12. Secure the striker with the wood screws provided.